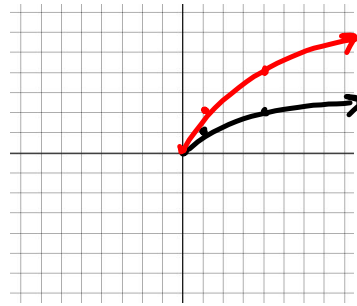
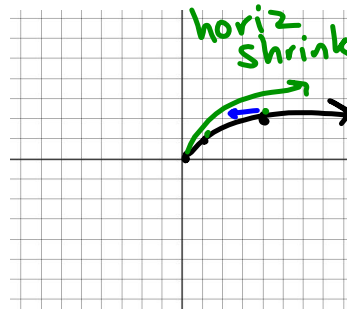


$y = 2\sqrt{x}$
vertical
y-values

x	y
0	0
1	1
4	2

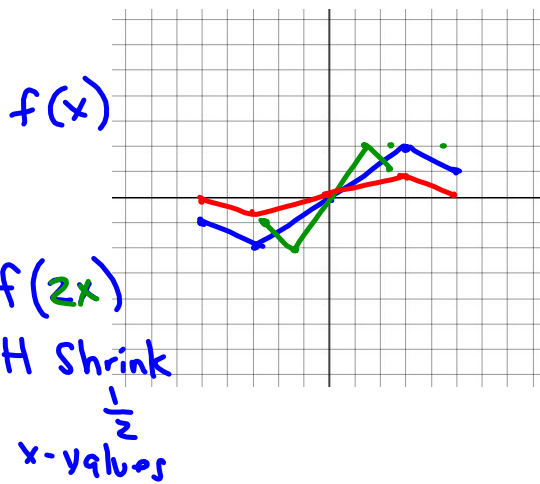


$y = \sqrt{3x}$
horizontal
x-values

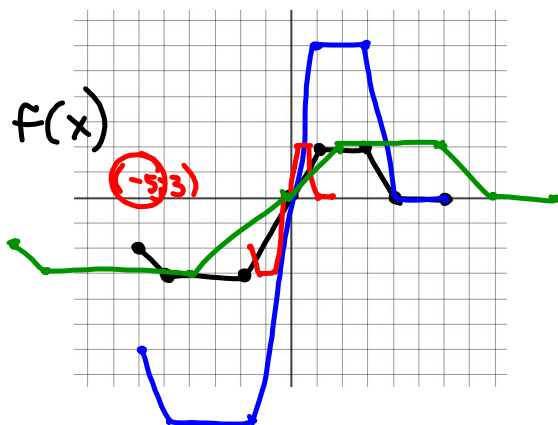


0	0
1	$\sqrt{2} = 1.7$
4	$\sqrt{8} = 2.8$

$\sqrt{3x}$



$\frac{1}{3} f(x)$
V Shrink $\frac{1}{3}$
y-values



$f(4x)$ H x Shrink $\frac{1}{4}$

$f(\frac{1}{2}x)$ H x Stretch 2

$3f(x)$
Vert Stretch 3