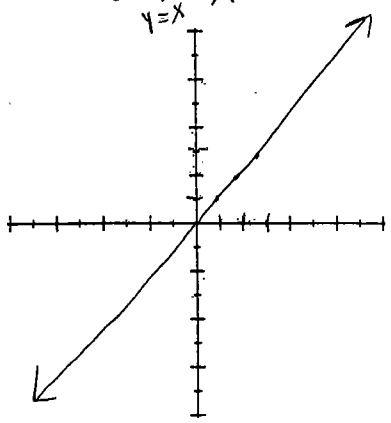


Name: \_\_\_\_\_ Date: 10/12/17 Period: 7

Topic: 1.3: 12 basic functions

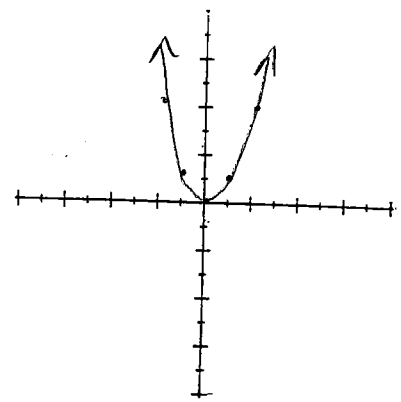
Identity function:  
 $f(x) = x$   
 $y = x$

linear



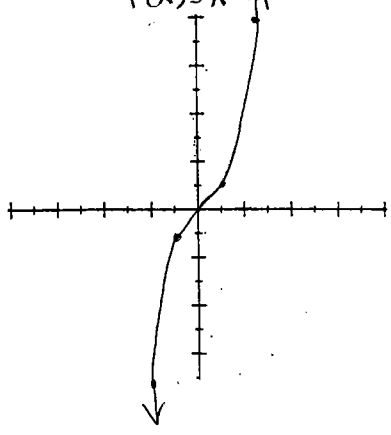
Squaring function:  
 $f(x) = x^2$

quadratic

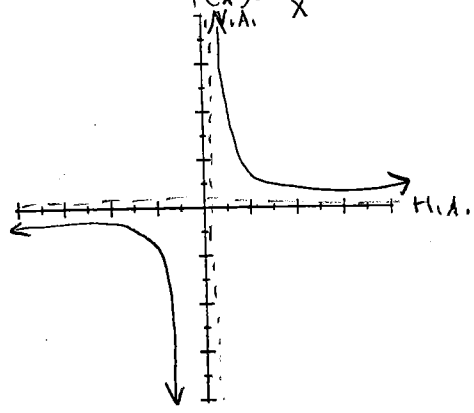


Cubing function:  
 $f(x) = x^3$

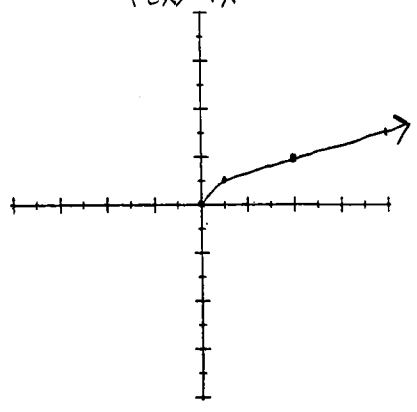
Cubic



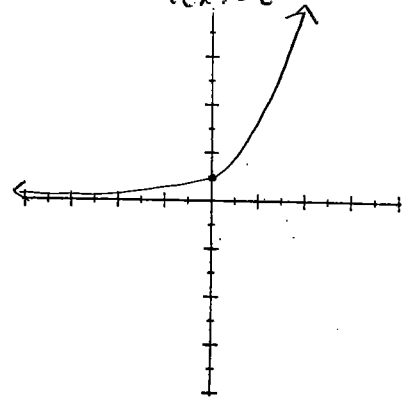
Reciprocal function:  
 $f(x) = \frac{1}{x}$



Square root function:  
 $f(x) = \sqrt{x}$

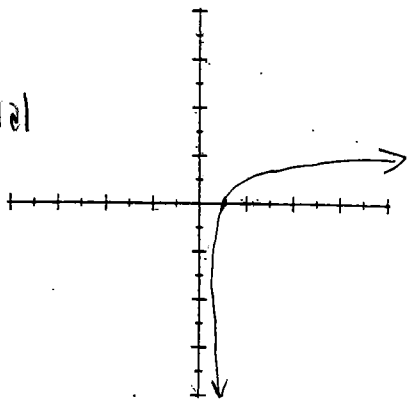


Exponential function:  
 $f(x) = e^x$

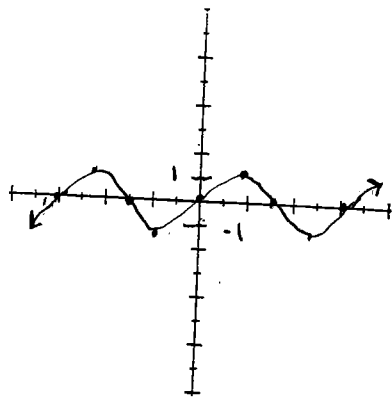


Natural log function:  
 $f(x) = \ln(x)$

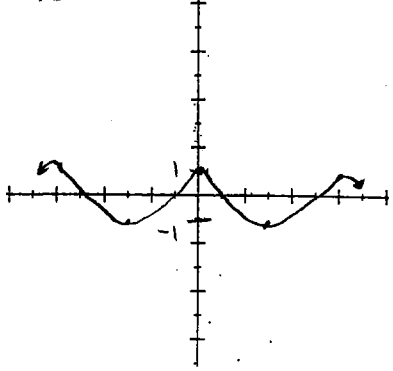
"inverse of exponential function"



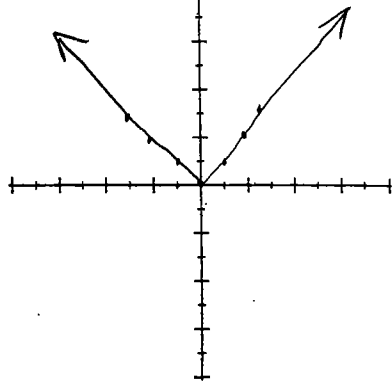
Sine function:  
 $f(x) = \sin(x)$



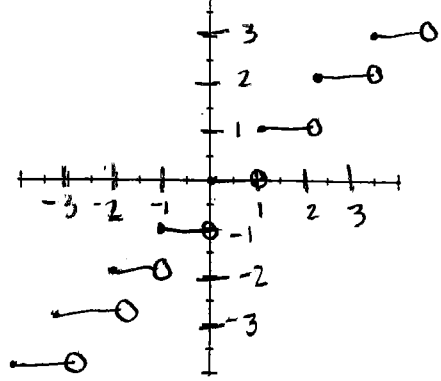
Cosine function:  
 $f(x) = \cos(x)$



Absolute Value function:  
 $f(x) = |x|$  or  $\text{abs}(x)$



Greatest Integer function:  
 $f(x) = \lceil x \rceil$  or  $\text{int}(x)$



Logistic function:  
 $f(x) = \frac{1}{1+e^{-x}}$

