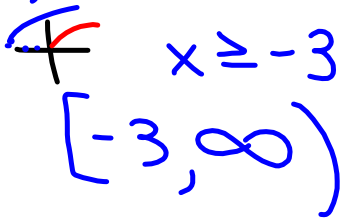


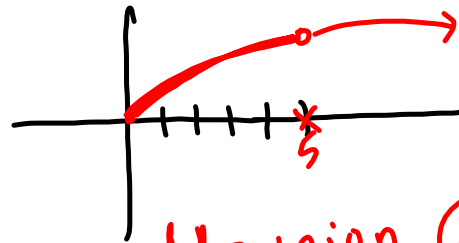
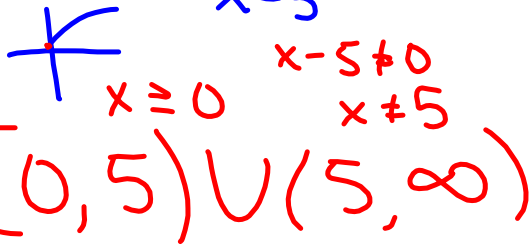
$$y = 2x + 1$$

Determine the domain

a)  $f(x) = \sqrt{x+3}$



b)  $g(x) = \frac{\sqrt{x}}{x-5}$



$\cup$  = union   
 $\cap$  = intersection

c)  $A(s) = \frac{\sqrt{3}}{4} (s)^2$   
 $s = \text{Real } \mathbb{R}$

Ex 4 Range

$f(x) = \frac{2}{x} \quad (-\infty, 0) \cup (0, \infty)$   
 domain  $x \neq 0$